



Air maths tuition

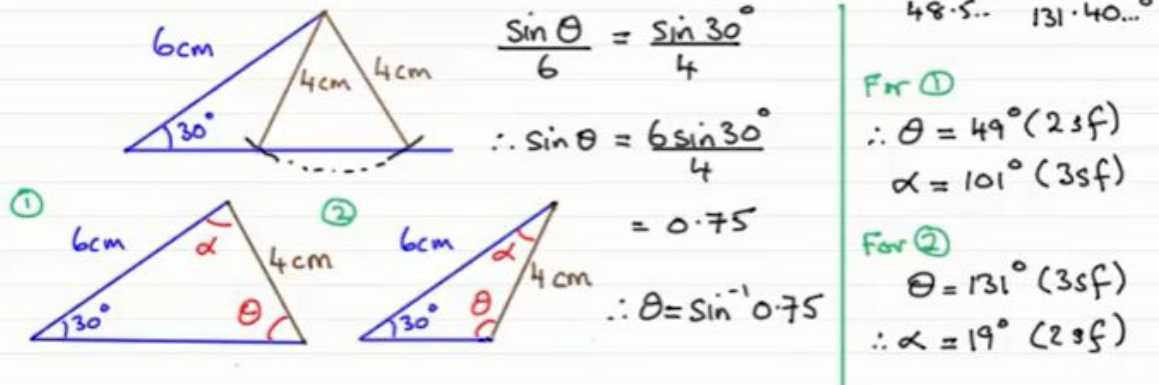
Interact, engage and perform

Sine Rule - The Ambiguous Case

sine rule: The Ambiguous Case

When asked to find an angle given 2 sides and an angle (which is not the included angle) more than one triangle can be drawn.

Given one side of a triangle is 4 cm and the opposite angle is 30° . Another side is of length 6 cm. Find the remaining two angles.



With the acknowledgement of [Exam Solutions](#).
Find lots more revision sheets on [Air Maths Tuition](#).
[This Video](#)



Exam Solutions
m a t h s m a d e e a s y