



Air maths tuition

Interact, engage and perform

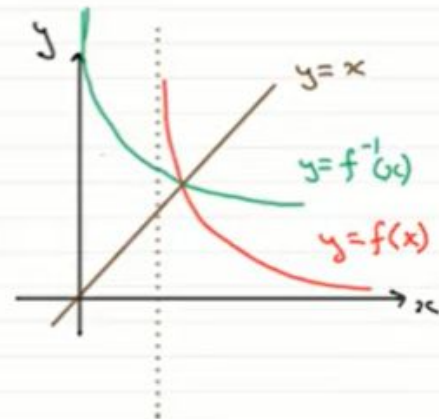
Domain | Past Paper Question | Edexcel Core Maths C3 January 2012 Q7c

$$f(x) = \frac{1}{2x-1}, \quad x \in \mathbb{R}, x > \frac{1}{2}$$

Find the domain of $f^{-1}(x)$

$$f^{-1}(x) = \frac{1+x}{2x}$$

Domain $x \in \mathbb{R}, x > 0$



With the acknowledgement of [Exam Solutions](#).
Find lots more revision sheets on [Air Maths Tuition](#).
[This Video](#)



Exam Solutions

maths made easy