



Air maths tuition

Interact, engage and perform

Curve sketching involving transformations | Past Paper Question | C3 Edexcel June 2013 Q2

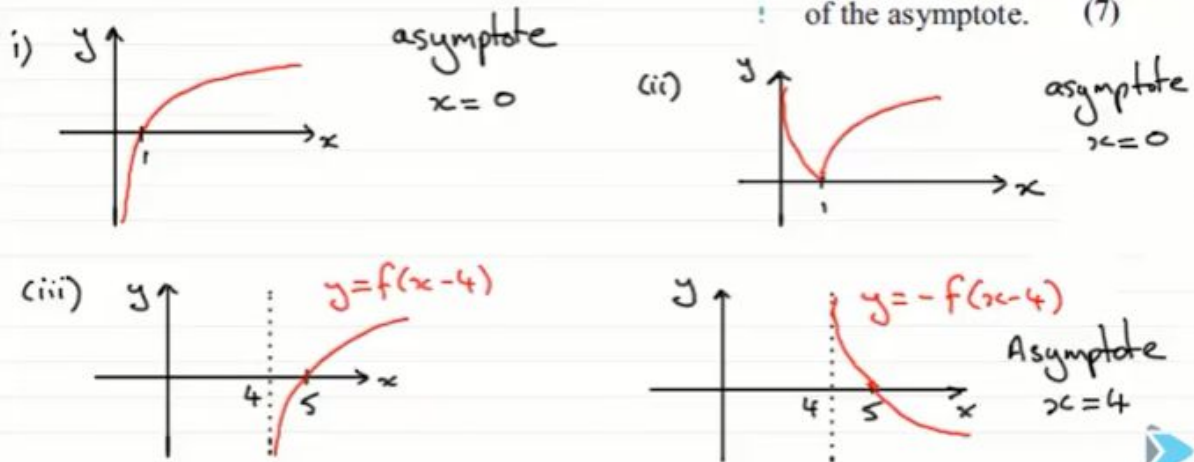
Given that $f(x) = \ln x$, $x > 0$

sketch on separate axes the graphs of

(i) $y = f(x)$, (ii) $y = |f(x)|$, (iii) $y = -f(x - 4)$.

Show, on each diagram, the point where the graph meets or crosses the x -axis.

In each case, state the equation of the asymptote. (7)



With the acknowledgement of [Exam Solutions](#).
Find lots more revision sheets on [Air Maths Tuition](#).
[This Video](#)



Exam Solutions
m a t h s m a d e e a s y